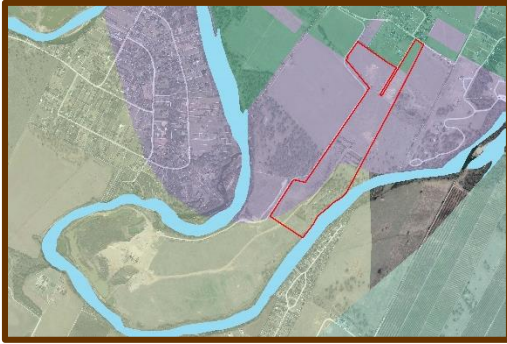


# LAND PLANNING SERVICES



**Sallie Burchett** is our Firm's consulting Land Planner. She has over 20 years of development experience. She Sallie assists clients with comprehensive planning and zoning projects, ordinance updates, annexations, development agreements, planned development district negotiations, geospatial analysis mapping and general community development.

Sallie's collaborative and integrative approach to development results in successful, sustainable projects that benefit human health, the environment, and the economy.

## Recent Accomplishments:

1. Administered annexations for the cities of Bruceville-Eddy, Salado, and Troy;
2. Improved the permit review process for the City of Troy;
3. Co-led an incentive initiative to foster preferred development along an under-utilized transportation corridor in West Lake Hills; and
4. Managed the adoption of a new zoning ordinance and created a zoning map utilizing Geographic Information Systems (GIS) for the City of Nolanville.
5. Provided P&Z training to Johnson City.



**Sallie Burchett** ALCP, received her Master's Degree in Community and Regional Planning from the University of Texas. Sallie helps cities large and small, urban and rural, and is a member of the following professional organizations:

- American Planning Association
- American Institute of Certified Planners
- LEED Green Associate
- Congress for the New Urbanism